

2018-2019 BOARD OF DIRECTORS

STATE BOARD of EDUCATION REPRESENTATIVES



Kathy Busch
Wichita



Deena Horst
Salina

GOVERNOR AT-LARGE APPOINTEES



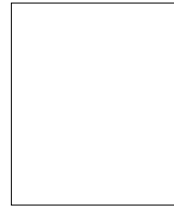
Tracey Gros,
Manhattan
CD-1



Pam McComas,
Topeka
CD-2



Gary Brockus,
Louisburg
CD-3



TBD
CD-4

BOARD of EDUCATION REPRESENTATIVES by CONGRESSIONAL DISTRICT (CD) and DIVISION (D)



Michael Crouch
Emporia
USD 253
CD-1, D-I



Bob Dietz
Smith Center
USD 237
CD-1, D-II



Tom Bruno
Auburn-Washburn
USD 437
CD-2, D-I



Mike Kastle
Parsons
USD 503
CD-2, D-II



Tom Mitchell
Blue Valley
USD 229
CD-3, D-I



Tom Edmondson
Olathe-Heritage
Christian School
CD-3, D-II



Scott Crawford
Maize
USD 266
CD-4, DI



Jamie Kaiser
Winfield
USD 465
CD-4, DII

ORGANIZATIONAL REPRESENTATIVES



Bert Lewis
Fort Scott
KASBC



Stan Boggs
Winfield
KCA



Terry Ostmeyer
Grainfield-
Wheatland/Grinnell
KIAAA



Gretchen Bixler
Goddard-Eisenhower
KMEA



Steve Harrell
Tonganoxie
KSCA

MIDDLE/JUNIOR HIGH SCHOOL REPRESENTATIVES



Alan Stein
Prin. Hill City
CD-1



Matthew Garber
Prin. Sabetha
CD-2



Rod Smith
Prin. Olathe-
Frontier Trail
CD-3



Bob Diepenbrock
Supt. Kingman-
Norwich, USD 331
CD-4



Justin Briggs
Ath. Dir. Dodge City-
Comanche
At-Large



Brandon Simmelink
Prin. McPherson
At-Large

2018-2019 BOARD OF DIRECTORS

SENIOR HIGH SCHOOL LEAGUE REPRESENTATIVES



Shannon Haydock
Prin. Rose Hill
Ark Vly./Chisholm Tr.



Amanda Grier
Asst. Prin. Andover-
Central
Ark Vly./Chisholm Tr.



Shane Backhus
Ath. Dir. McPherson
Ark Vly./Chisholm Tr.



Ken Stonebraker
Ath. Dir. Salina-South
Ark Vly./Chisholm Tr.



Rod Wittmer
Prin. Holton
Big Seven



Britton Hart
Prin. Emporia
Centennial



Rebecca Morrissey
Prin. Topeka
Centennial



Penny Lane
Ath. Dir. Topeka-
Washburn Rural
Centennial



Rick Blosser
Prin. Nickerson
Central Kansas



Greg Rosenhagen
Prin. Cheney
Central Plains



Tom Flax
Prin. Ness City
Central Prairie



Toby VanCleave
Prin. Galena
CNC



Brett Potts
Prin. Overland Park-
Blue Valley West
Eastern Kansas



Amy Murphy
Prin. Overland Park-
Blue Valley Northwest
Eastern Kansas



Mark Huppe
Ath. Dir. Lenexa-
St. James Academy
Eastern Kansas



Kelly McDiffett
Prin. Council Grove
Flint Hills



Jeff Hines
Prin. Paola
Frontier



Brad McCormick
Prin. Scott City
Great West Act. Conf.



Gil Alvarez
Asst. Supt. Wichita
USD 259
Greater Wichita



Cara Ledy
Prin. Wichita-South
Greater Wichita



J. Means
Dist. Ath. Dir. Wichita
USD 259
Greater Wichita



Galen Unruh
Prin. Elbing-Berean
Academy
Heart of America



Brent Shaffer
Prin. Kiowa-South
Barber
Heart of the Plains



Monty Marlin
Prin. Sublette
Hi-Plains



Geoffrey Markos
Prin. Kansas City-J.C.
Harmon
Kansas City-Atchison



Matt Renk
Ath. Dir. Atchison
Kansas City-Atchison



Shane Clark
Prin. Olpe
Lyon County



Rudy Perez
Prin. Norton
Mid-Continent



Brad Womack
Prin. Silver Lake
Mid-East



Alan Sheets
Prin. Belleville-
Republic Co.
North Central A.A.



Darren Schroeder
Prin. Marysville
North Central
Kansas



Darren Shupe
Prin. Holton-Jackson
Heights
Northeast Kansas



Roger Perkins
Prin. Miltonvale-
Southern Cloud
Northern Plains



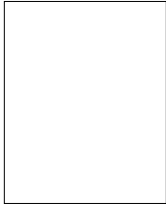
David Morrow
Prin. St. Francis
Northwest Kansas



Stacy Reed
Prin. Burlington
Pioneer

2018-2019 BOARD OF DIRECTORS

SENIOR HIGH SCHOOL LEAGUE REPRESENTATIVES



Dale Adams,
Supt. Udall,
USD 463
South Central Border



Shane Holtzman
Prin. Altamont-
Labette County
Southeast Kansas



Ty Theurer
Prin. Coldwater-
South Central
SPAA-Iroquois
Activity Assoc.



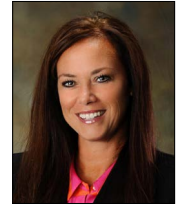
Jason Herman
Prin. Olathe North
Sunflower



Mark Meyer
Prin. Gardner-
Edgerton
Sunflower



Myron Graber
Prin. Lawrence-
Free State
Sunflower



Michelle Hubbard
Asst. Supt. USD 512
Shawnee Mission
Sunflower



Jim Dillon
Prin. Mound City-
Jayhawk-Linn
Three Rivers



Noah Francis
Prin. Erie
Tri-Valley



Dean Dalinghaus
Prin. Frankfort
Twin Valley



Ed West
Prin. Tecumseh-
Shawnee Heights
United Kansas
Conference



James Vanek
Ath. Dir. Leavenworth
United Kansas
Conference



Martin Straub
Prin. Hays
Western Athletic
Conference



Drew Thon
Ath. Dir. Garden City
Western Athletic
Conference



Steve Raymer
Supt. USD 103 Cheylin
Western Kansas-
Liberty



Scott Boden
Prin. Goessel
Wheat State



Michelle Olson
Prin. Kansas City-
Bishop Ward
Independent Schools

Academics + Activities = Curriculum Partners

WHY HAVE STUDENT ACTIVITIES? In the last few years the value of high school activities has been questioned. Let's set the record straight as to what high school activities are all about. First of all, they are not a separate part of our overall education program but an integral part of it. A good, well-rounded education means not only one that is academically oriented, but one that also includes physical, social and emotional development. These are available through a good school activities program.

Activities are a citizenship laboratory—Participation in activities encompasses all races and creeds, and teaches a student that it is a privilege and an honor to represent his or her school. Students learn that activities are important because they show a person how to win, and how to lose. Activities teach self-confidence, poise, respect for the rules and good sportsmanship. Through participation in activities, students learn tolerance and understanding for people and how to control their emotions. They also learn the self-satisfaction of accomplishing a goal.

Interscholastic activities constitute a part of the right kind of “growing up” experiences for American boys and girls. Youth are interested in doing things well—in belonging—in displaying loyalty. With a well administered school program, students and spectators become better citizens through participation and observance of activities conducted under established rules impartially administered.

Activities encourage physical and mental excellence—Documented reports and statistics from the high schools of Kansas continue to show the “holding power” of activities programs. Those students engaged in any phase of the extracurricular program show a drop-out rate far below that of the uninvolved student. Over 90 percent of those students who drop out of school at the senior high level have never been involved in any activity as representatives of their school!

Grade point averages of students in athletics, speech, music, cheerleading, club programs, etc., rank well above those students who choose not to participate. Interestingly enough, the statistics point out “the more participation the better the GPA!”

The loss of school instructional time, documented by reports from member schools, clearly shows students miss more instructional class time for family vacations, medical reasons, parental excuses, vocational activities, etc., than they do for all KSHSAA-sponsored school activities combined.

Activities reach out to the community—Activities in our Kansas schools will be as good and as sound as those who administer and support them. Rules and regulations are valueless unless they are embedded in the “grass roots” of the local school and community. The underlying philosophy of interscholastic activities presupposes these rules and regulations are for the good of the students themselves—just as are the other phases of the educational program—and that is the way the citizens of Kansas want them to be.