

Application Cards and Forms

Application cards and forms are available behind the school login on the KSHSAA website. See athletic director for school ID and coach password. Send the appropriate card (SPR-3 and/or SPR-4) with a \$40 deposit per delegate and sponsor to the KSHSAA on or before May 1. Camp reservations will not be guaranteed without receipt of deposit or purchase order. Names and addresses of delegates are to be submitted to the KSHSAA on Roster of Delegates forms (SPR-5 and/or SPR-6) by May 15. After receipt of application form(s), detailed information will be sent to you regarding registration, daily schedule and campus information.

Fees

The entire residential registration fee of \$300 per delegate or sponsor may be submitted with your application. If only a deposit is sent, the balance is due by May 30 for all camps. The fee includes secondary accident/sickness insurance, 3 nights housing, 9 meals, conference materials and quality UCA/UDA instructors.

We are again offering a commuter camp option this year for schools who are in close proximity. The entire commuter registration fee of \$230 per delegate or sponsor may be submitted with your application. If only a deposit is sent (\$40 per participant) the balance is due by May 30 for all camps. The commuter fee includes accident/sickness insurance, conference materials and quality UCA/UDA instruction.

Refund Policy: No refund of \$40.00 deposits (administrative fee). Full refund (less \$40) if cancelled before May 30. 50% refund if cancelled between May 30 and 2 weeks prior to camp start date. No refund if cancelled less than 2 weeks prior to camp start dates. All refund requests must be accompanied by a letter from a school administrator on school letterhead.

Who May Attend

Only registered camp participants and coaches/sponsors may attend spirit camps. Coaches/sponsors may NOT bring their children to camp.

Send Your Coach/Advisor to the Conference

Our summer camps are for coaches, sponsors and advisors, too! To prove that, we offer a special tuition reduction for ONE adult. Additional information is provided on registration forms.

20+ students - no tuition charged • 10-19 students - 1/2 tuition charged • 0-9 students - full tuition charged

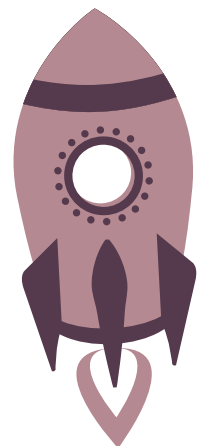
Schools are strongly urged to send qualified adults who are serving as advisors or chaperones with their students to camps. These individuals will be responsible for their students. Each day a special teaching session for coaches and advisors will be conducted by UCA/UDA personnel.

Qualified coaches (at least 3 years of experience) may apply for a position as a camp counselor. All counselors receive 1/2 price tuition for a cheer or dance team camp. Counselors assist and supervise dorms at night and are free during the day to participate in daily advisors' workshops, idea exchanges, observe classes and participate in camp activities with their students.

Spirit Safety Meetings are Required

Mandatory spirit safety meetings for head spirit coaches/advisors (grades 7-12) will be conducted at all KSHSAA Summer Cheer/Dance Camps and all Fall Spirit Spreader Clinics. Contact your principal or www.kshsaa.org/public/spirit/requiredmeetings.cfm for Spirit Safety Meeting dates and sites.

****KSHSAA \$5 Million Catastrophic Insurance is in effect ONLY at KSHSAA Summer Conferences.****



KANSAS STATE HIGH SCHOOL ACTIVITIES ASSOCIATION
601 SW Commerce Place | Topeka, KS 66615 | PO Box 495 | Topeka, KS 66601-0495
785-273-5329 | Fax: 785-271-0236 | www.kshsaa.org

LAUNCH

THE Spirit



2018 KSHSAA Summer Spirit Camps

Cheer Camps

- June 5-8 Salina-Kansas Wesleyan University (Regular & Elite) (Tuesday-Friday)
- June 11-14 Salina-Kansas Wesleyan University (Elite & Stunt Performance) (Monday-Thursday)
- June 12-15 El Dorado-Butler Community College (Regular & Elite) (Tuesday-Friday)
- June 18-21 El Dorado-Butler Community College (Elite & Stunt Performance) (Monday-Thursday)
- June 26-29 Salina-Kansas Wesleyan University (Regular & Elite) (Tuesday-Friday)
- July 11-14 Coffeyville Community College (Regular) (Wednesday-Saturday)
- July 16-19 El Dorado-Butler Community College (Regular) (Monday-Thursday)

Dance Camps

Multiple dance routine styles and levels will be customized toward attendees' abilities!

- June 5-8 Salina-Kansas Wesleyan University (Tuesday-Friday)
- June 11-14 Salina-Kansas Wesleyan University (Monday-Thursday)
- June 26-29 Salina-Kansas Wesleyan University (Tuesday-Friday)
- July 11-14 Coffeyville Community College (Wednesday-Saturday)
- July 16-19 El Dorado-Butler Community College (Monday-Thursday)

Pick Date
ASAP!!

Elite Cheer Option Camps

Elite camps are designed for those teams who have mastered advanced stunts and are ready for the next level. Elite camps feature faster paced stunt and transition classes (participants will advance through liberties in their first stunt class on day one), additional emphasis on spotting and safety, and faster paced cheer and dance classes. See www.kshsaa.org>Non-Athletic>Spirit Activities>Summer Spirit Camps for more information.

The Elite camp option will be offered at the following:

- June 5-8 Salina-Kansas Wesleyan University (Tuesday-Friday)
- June 11-14 Salina-Kansas Wesleyan University (Monday-Thursday)
- June 12-15 El Dorado-Butler Community College (Tuesday-Friday)
- June 18-21 El Dorado-Butler Community College (Monday-Thursday)
- June 26-29 Salina-Kansas Wesleyan University (Tuesday-Friday)

Performance Stunt Camps

For competitive teams interested in a stunt and performance based camp. Curriculum is based on creative stunts, transitions, and performance for all levels and sizes of teams! This is a routine based camp where teams will leave camp with a performance routine consisting of a short dance and a Jump, Tumble, Stunt, and Pyramid Transition that will be approximately 17 eight counts in length. Cheerleaders will still have some traditional aspects of camp such as Team UCA, the Homecoming Rally and, of course, All American Selection.

Special Classes include: Strength and Conditioning, Flipping Pyramid Class, and Stretching and Flexibility

- June 11-14 Salina-Kansas Wesleyan University (Monday-Thursday)
- June 18-21 El Dorado-Butler Community College (Monday-Thursday)



Notes:

KSHSAA Spirit Camps:

- Book Early!! - Do Not Want to Miss This
- \$40 per camper deposit fee (secures space)
- Discounts for coaches with 10+ campers

Go Rockets!!

Camp Information

- \$5 Million Catastrophic Insurance Coverage
- 5 to 12 UCA/UDA Camp Instructors Trained in KSHSAA Rules
- Required KSHSAA Coach's Face-to-Face Safety Rules Meeting
- Air-Conditioned Dorms and Practice Facilities
- Onsite Full-Time Athletic Trainer(s)
- 24/7 KSHSAA Camp Director
- 4 Days, 3 Nights, 9 Meals, unlimited team/coach bonding and a LIFETIME OF MEMORIES

2018 Game Day Competition - Saturday, November 17, 2018

Game Day (Cheer Emphasis)

All KSHSAA 2018 Summer Cheer Camps will have a "Game Day" learning emphasis to educate cheer coaches and squads on the specifics of "Game Day".

Join us at a KSHSAA summer camp so you are prepared for the second annual 2018 KSHSAA "Game Day" Cheer Showcase.
2018 Site - To Be Determined

Remind Coach!!

